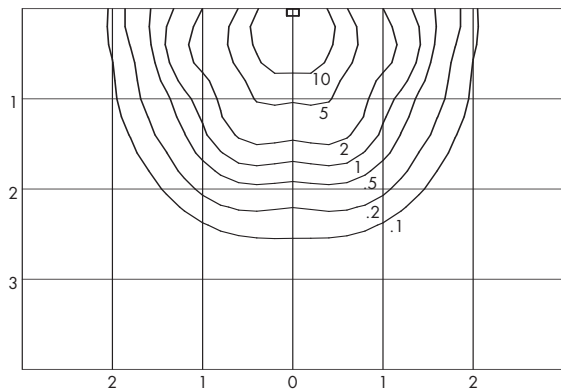


PHOTOMETRICS



UNITS SHOWN IN TERMS OF MOUNTING HEIGHT
INITIAL FOOTCANDLES SHOWN

CATALOG NUMBER: WCS175M
 TEST NUMBER: 25252
 LAMP: METAL HALIDE
 WATTAGE: 175
 LUMENS: 14,400
 TILT ANGLE: 0°
 MOUNTING HEIGHT: 15 FEET

LIGHT LEVEL MULTIPLYING FACTORS	
MOUNTING HEIGHT	MULTIPLIER
25'	0.36
20'	0.56
15'	1.00
12'	1.56
10'	2.25
8'	3.52

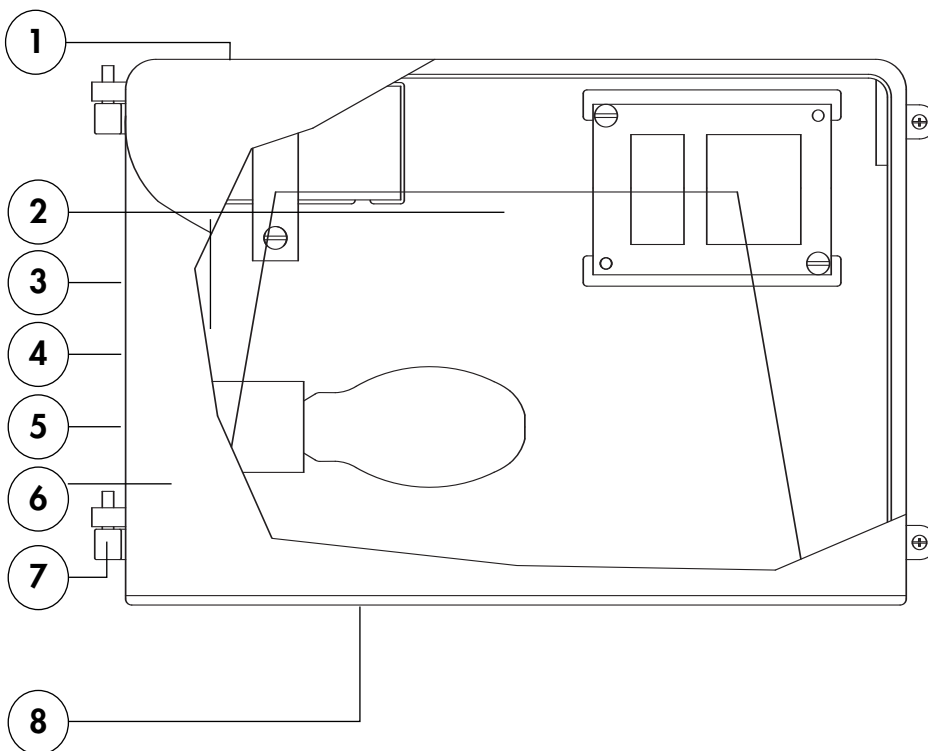
ADDITIONAL TEST NUMBERS

DESCRIPTION/CATALOG NUMBER	TEST NUMBER
WCS035S	25247
WCS050S	25247P
WCS070S	25251P
WCS100S	25251
WCS150S	25248
WCS050M	25245
WCS070M	25245P
WCS100M	25246
WCS150M	25246P

PRODUCT FEATURES

UL 1598 Listed wet location, 25°C ambient, and feed-through wiring for all lamp wattages listed.

1. Heavy duty two piece, die cast aluminum housing.
2. Aluminum reflector.
3. Silicone gasketing provides protection against moisture.
4. Mounts directly to 3-1/2" octagon or 4" square outlet box.
5. 1/2" NPS tapped holes provided in three locations for surface conduit entry or optional photo control.
6. Dark bronze polyester powder finish for impact, corrosion and UV resistance.
7. Integral cast-in aluminum hinges.
8. Clear tempered glass lens is thermal and shock resistant.



Visit our web site at www.daybritelighting.com

776 South Green Street Tupelo, MS 38804 Phone: 662-842-7212 Fax: 662-841-5501

189 Bullock Drive Markham, Ontario Canada L3P 1W4 Phone: 905-294-9570 Fax: 905-294-8911
 Day-Brite Lighting reserves the right to make changes without notice. ©May 2005. DL.5M0505

WL-43190

Day-Brite® Lighting
 a Genlyte company